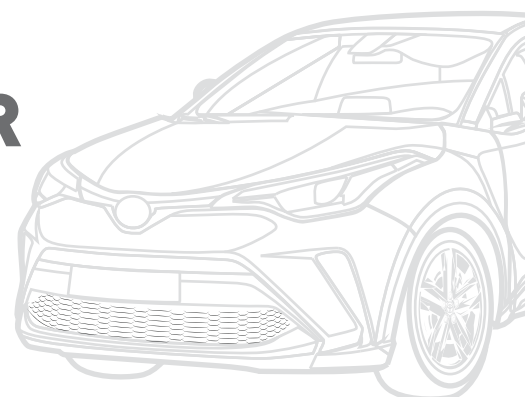




EK RISHTA.... EK VISHWAS



2&4 WHEELER CATALOGUE





Late Sh. J.P. Minda
Founder & Chairman
JP Minda Group

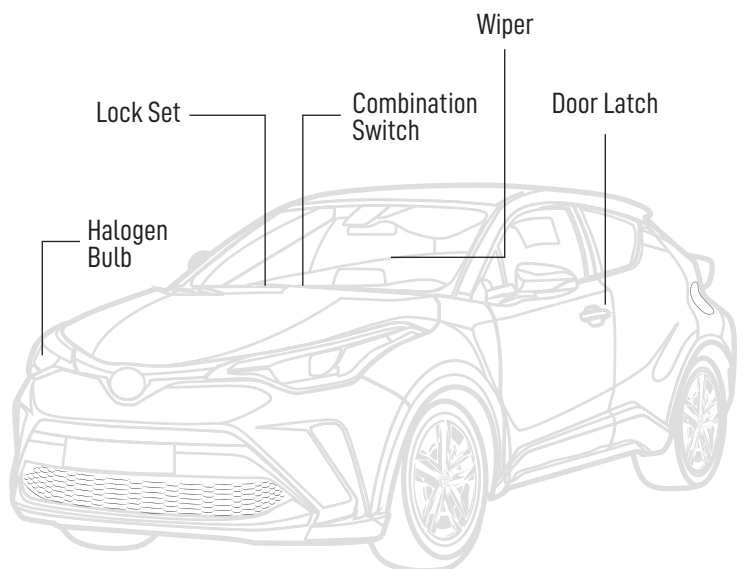
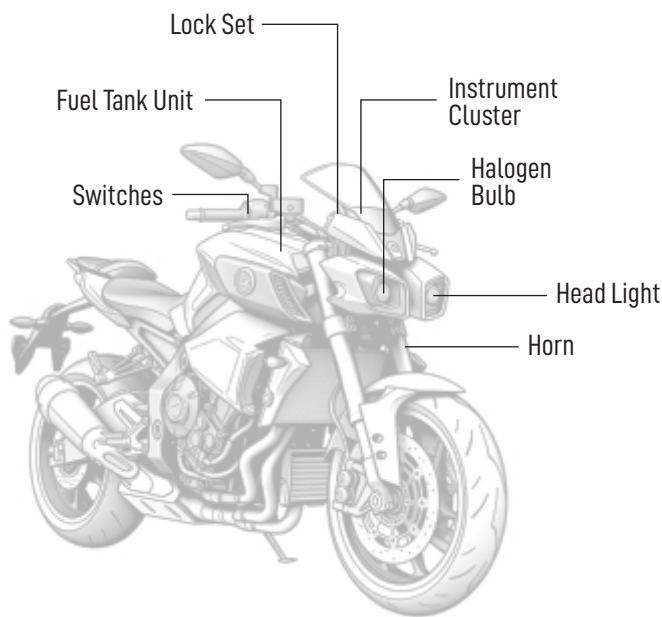


THE LEADER IN AUTOMOTIVE COMPONENTS

About us

- Evolution into a multifarious business conglomerate that assimilates latest technology inputs from its global partners through numerous Joint Ventures.
- Mr. JP Minda believes that the customer is always right and thus deserves to be served the best.
- Our quotient for consistency and customer satisfaction has always been high.
- Success-wave of in-house R&D and latest technology inputs from our global partners.
- JPM Group is a a successful enterprise with 24 listed companies at strategic locations nationwide.
- India's most dynamic business group.

2&4 WHEELER PRODUCTS



ADVANCED DIGITAL METERS

EK RISHTA
EK VISHWAS



ANALOG METERS



INSTRUMENT CLUSTERS



Part No.: J 1002

Instrument Cluster

◉ CRUEX O/M



Part No.: J 1003

Instrument Cluster

◉ CRUEX N/M



Part No.: J 1004 N

Instrument Cluster

◉ ACTEVA O/M



Part No.: J 1005 N

Instrument Cluster

◉ ETERANO



Part No.: J 1006 N

Instrument Cluster

◉ ACTEVA N/M



Part No.: J 1007 N

Instrument Cluster

◉ EXCESS



Part No.: J 1008 N

Instrument Cluster

◉ DEO



Part No.: J 1009

Instrument Cluster

◉ DEO N/M



Part No.: J 1012 N

Instrument Cluster

◉ CD DLEX



Part No.: J 1013 N

Instrument Cluster

- ◉ SUP. SPL. GTR



Part No.: J 1014 N

Instrument Cluster

- ◉ SPLANDOR WHITE



Part No.: J 1014 N

Instrument Cluster

- ◉ SPLANDOR BLACK



Part No.: J 1015

Instrument Cluster

- ◉ PASION Y



Part No.: J 1015 N

Instrument Cluster

- ◉ PASION W



Part No.: J 1016 N

Instrument Cluster

- ◉ CC DEN 2



Part No.: J 1017 N

Instrument Cluster

- ◉ CRUX N/M WHITE



Part No.: J 1018 N

Instrument Cluster

- ◉ SPLANDOR +



Part No.: J 1019 N

Instrument Cluster

- ◉ SUP. SPL. O/M DRUM BRK

INSTRUMENT CLUSTERS



Part No.: J 1020 N

Instrument Cluster

- SUP. SPL. O/M DISK BRK



Part No.: J 1021 N

Instrument Cluster

- GLAMOUR (DRUM BRK)



Part No.: J 1022

Instrument Cluster

- GLAMOUR DISC BRK



Part No.: J 1024 N

Instrument Cluster

- SUP. SPL. N/M



Part No.: J 1025 N

Instrument Cluster

- ACHIEVER



Part No.: J 1027 N

Instrument Cluster

- SPALNDOR 3NXG



Part No.: J 1030 N

Instrument Cluster

- PLEAZRE



Part No.: J 1031

Instrument Cluster

- UNECORN N/M



Part No.: J 1032 N

Instrument Cluster

- SHIINE



Part No.: J 1035
Instrument Cluster
❖ PASION PLUS Y



Part No.: J 1035 N
Instrument Cluster
❖ PASIIION PLUS W



Part No.: J 1036 N
Instrument Cluster
❖ PASIIION PRO



Part No.: J 1037 N
Instrument Cluster
❖ PASIIION PRO N/M DRUM BRK



Part No.: J 1038 N
Instrument Cluster
❖ PASIIION PRO N/M DISK BRK



Part No.: J 1041 N
Instrument Cluster
❖ PASSION XPRO DRUM BRK



Part No.: J 1042 N
Instrument Cluster
❖ PASIIION XPRO DISK BRK



Part No.: J 1043 N
Instrument Cluster
❖ SPLANDOR I SMART



Part No.: J 1044 N
Instrument Cluster
❖ SPL. PRO O/M

INSTRUMENT CLUSTERS



Part No.: J 1045 N

Instrument Cluster

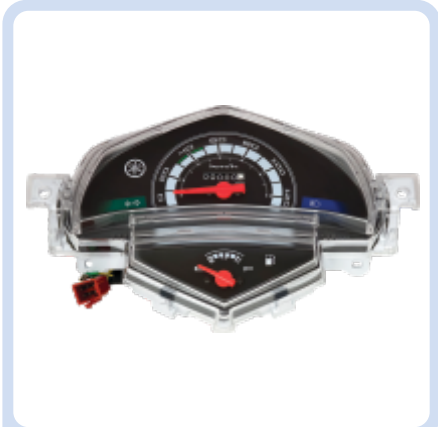
- ◉ SPL. PRO N/M



Part No.: J 1046 N

Instrument Cluster

- ◉ RAEY T.1



Part No.: J 1047 N

Instrument Cluster

- ◉ RAEY T.2



Part No.: J 1048 N

Instrument Cluster

- ◉ SZ TYPE - 1 (64B10)



Part No.: J 1049 N

Instrument Cluster

- ◉ SZ TYPE 2



Part No.: J 1050

Instrument Cluster

- ◉ YAMAHA SZ T3



Part No.: J 1051

Instrument Cluster

- ◉ SEZ TYPE-4 (IPM 10)



Part No.: J 1052 N

Instrument Cluster

- ◉ YAMAHA SZ N/M



Part No.: J 1053 N

Instrument Cluster

- ◉ SHIINE N/M



Part No.: J 1054 N

Instrument Cluster

➤ DREAM YUGA



Part No.: J 1055 N

Instrument Cluster

➤ DREAM NEO



Part No.: J 1056 N

Instrument Cluster

➤ TRIIGER



Part No.: J 1057 N

Instrument Cluster

➤ SYUNER



Part No.: J 1059

Instrument Cluster

➤ AVIATOR



Part No.: J 1060 N

Instrument Cluster

➤ TWIISTER



Part No.: J 1061 N

Instrument Cluster

➤ HEAT



Part No.: J 1062 N

Instrument Cluster

➤ ZEUAGE



Part No.: J 1063 N

Instrument Cluster

➤ SLUNG SHOT O/M

INSTRUMENT CLUSTERS



Part No.: J 1064 N
Instrument Cluster
◉ SLING N/M



Part No.: J 1065 N
Instrument Cluster
◉ GES 150



Part No.: J 1066 N
Instrument Cluster
◉ GIXAR



Part No.: J 1067 N
Instrument Cluster
◉ SWESS



Part No.: J 1068 N
Instrument Cluster
◉ HAYETEE



Part No.: J 1072 N
Instrument Cluster
◉ UNECORN DAZLER



Part No.: J 1073
Instrument Cluster
◉ HF DLEX BS-6
KICK



Part No.: J 1074 N
Instrument Cluster
◉ HF DLEX BS-VI SELF



Part No.: J 1075 N
Instrument Cluster
◉ HF DLEX BS6



Part No.: J 1076 N

Instrument Cluster

- ◉ SPLENDOR BS 6 SELF



Part No.: J 1077 N

Instrument Cluster

- ◉ HERO SPL BS6



Part No.: J 1079 N

Instrument Cluster

- ◉ SUP SPL BS6



Part No.: J 1080 N

Instrument Cluster

- ◉ GLAMOUR BS VI



Part No.: J 1081 N

Instrument Cluster

- ◉ XCESS BS-VI



Part No.: J 1082 N

Instrument Cluster

- ◉ UNICORN BS6



Part No.: J 1083

Instrument Cluster

- ◉ NAVI BS-6



Part No.: J 1084 N

Instrument Cluster

- ◉ ACTEVA 125 BS6



Part No.: J 1085 N

Instrument Cluster

- ◉ ACTEVA 6G BS6

INSTRUMENT CLUSTERS



Part No.: J 1086

Instrument Cluster

- SHINE SP BS-VI



Part No.: J 1087 N

Instrument Cluster

- MAESTRO



Part No.: J 1088

Instrument Cluster

- DUET



Part No.: J 1089

Instrument Cluster

- KARISMA ZMR DIGITAL



Part No.: J 1090

Instrument Cluster

- GLAMOUR FI VERSION



Part No.: J 1093 N

Instrument Cluster

- DESTENI



Part No.: J 1094 N

Instrument Cluster

- i-SMART



Part No.: J 1096

Instrument Cluster

- ACTEVA 5G DIGITAL



Part No.: J 1097

Instrument Cluster

- SHIINE T.3



Part No.: J 1098 N

Instrument Cluster

- DAWN 100 EXP



Part No.: J 1099

Instrument Cluster

- DAAWN 100 WITH CHARGER
SELF START EXP



Part No.: J 1102

Instrument Cluster

- SPLANDOR BS-VI



Part No.: J 1106

Instrument Cluster

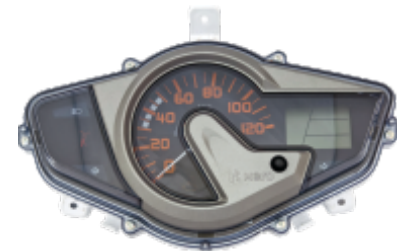
- SUPER SPLEDOR BS6
ELECTRONIC



Part No.: J 1112

Instrument Cluster

- PLEASUR N/M



Part No.: J 1113

Instrument Cluster

- MAESTRO BS6 110 CC



Part No.: J 1114

Instrument Cluster

- MAESTRO-125 BS-4



Part No.: J 1115

Instrument Cluster

- MAESTRO-125 BS-6

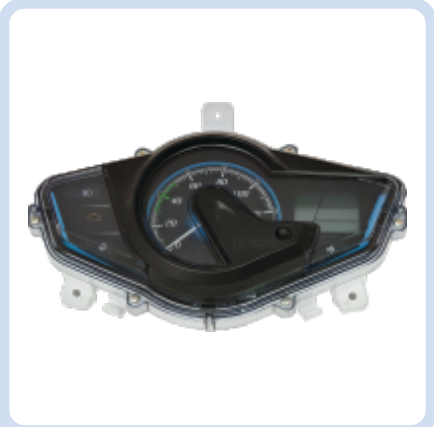


Part No.: J 1116

Instrument Cluster

- MAESTRO 125 CC

INSTRUMENT CLUSTERS



Part No.: J 1117

Instrument Cluster

- MAESTRO 125 CC FI EXP.



Part No.: J 1118

Instrument Cluster

- XOOM LX



Part No.: J 1119

Instrument Cluster

- XOOM VX



Part No.: J 1121

Instrument Cluster

- DESTINI BS6



Part No.: J 1123

Instrument Cluster

- DISTINI T-2



Part No.: J 1125

Instrument Cluster

- YAAMAHA FZE 25
(W/O ABS)



Part No.: J 1128

Instrument Cluster

- YAAMAHA R 15
(6 SYMBOL)



Part No.: J 1129

Instrument Cluster

- YAAMAHA RR 15
(6 SYMBOL TYPE 2 WITH ABS)



Part No.: J 1130

Instrument Cluster

- YAMAHA MTE 15 BLACK LCD
WITH ABS 6 SYMBOL



Part No.: J 1131

Instrument Cluster

- YAMAHA FZE 25
BLACK LCD WITH ABS



Part No.: J 1132

Instrument Cluster

- YAAMAHA FZZ 15
(5 SYMBOL TYPE-1)



Part No.: J 1134

Instrument Cluster

- YAAMAHA FZXX
(NON TCS SYMBOL)



Part No.: J 1136

Instrument Cluster

- YAAMAHA FZZ 15



Part No.: J 1137

Instrument Cluster

- MTE 15 (6 SYMBOL)
WITH TCS T-1



Part No.: J 1138

Instrument Cluster

- YAAMAHA MTE 15



Part No.: J 1139

Instrument Cluster

- YAAMAHA R 15 (V4 150)



Part No.: J 1141

Instrument Cluster

- GIXXAR
(4 SYMBOL)



Part No.: J 1142

Instrument Cluster

- GIXXAR
(5 SYMBOL)

INSTRUMENT CLUSTERS



Part No.: J 1144

Instrument Cluster

- GIXXAR (6 SYMBOL)



Part No.: J 1145

Instrument Cluster

- GIXXAR (7 SYMBOL)
SF 150 TYPE-1



Part No.: J 1146

Instrument Cluster

- GIXXAR (7 SYMBOL)
SF 160 TYPE-2



Part No.: J 1147

Instrument Cluster

- GIXXAR (7 SYMBOL)
SF 250 BS-VI



Part No.: J 1148

Instrument Cluster

- GIXXAR
(7 SYMBOL OLD)



Part No.: J 1149

Instrument Cluster

- GIXXAR (8 SYMBOL)
SF 250 BS-VI



Part No.: J 1150

Instrument Cluster

- GIXXAR
4 SYMBOL



Part No.: J 1174

Instrument Cluster

- ACTEVA 125
DIGITAL



Part No.: J 1175

Instrument Cluster

- ACTIVA 6G
MECHANICAL



Part No.: J 1176

Instrument Cluster

- ACTIVA 125



Part No.: J 1179 N

Instrument Cluster

- ACTIVA 5G



Part No.: J 1181

Instrument Cluster

- DIO BS3



Part No.: J 1182

Instrument Cluster

- GLAMOUR
BEFORE FI VERSION

2-WHEELERS LOCK SETS





Part no.: JSA 001

Lock Set

- SUZUKE AXCESS



Part no.: STL 0113

Lock Set

- STL AMBITION



Part no.: JHDY 201

Lock Set

- STL DRAEM YUGA



Part no.: JHAV 07

Lock Set

- AVAITOR T-2



Part no.: JHA 001

Lock Set

- ACTEVA T-1



Part no.: JHU 103

Lock Set

- STL UNECORN N/M



Part no.: JHA 002

Lock Set

- ACTEVA N/M



Part no.: JHA 005

Lock Set

- ACTEVA I



Part no.: JHD 001

Lock Set

- DEO T-1

LOCK SETS (2-WHEELER)



Part no.: JSH 201

Lock Set

- STL CB SHIINE



Part no.: JHD 002

Lock Set

- DEO T-2



Part no.: JHE 001

Lock Set

- ETERANO



Part no.: JHAV 01

Lock Set

- AVAITOR T-1



Part no.: JHAV 08

Lock Set

- AVAITOR T-3



Part no.: JRET 001

Lock Set

- THANDERBIRD



Part no.: JHCB 001

Lock Set

- CBR 150



Part no.: JHHN 001

Lock Set

- ACTEVA I



Part no.: JHH 001

Lock Set

- BLACK BLADE



Part no.: PLS 1918

LOCK SET

- SPL PRO SET OF 2



Part no.: LS 1918

Lock Set

- SPLENDOR PRO



Part no.: JHST 001

Lock Set

- STUNER



Part no.: JHB 001

Lock Set

- HORNET / X BLADE



Part no.: JHTR 001

Lock Set

- TRIGER



Part no.: JHDN 001

Lock Set

- DREM NEO CD



Part no.: JREC 001

Lock Set

- CONTINENTAL



Part no.: LS 1919

Lock Set

- SUP. SPLENDOR



Part no.: J1616

Lock Set

- PASSION PLUS

LOCK SETS (2-WHEELER)



Part no.: JHDN 001

Lock Set

• DREAM NEO CD



Part no.: JHT 001

Lock Set

• TWISTER



Part no.: LS 0304

Lock Set

• CDEN 3 DLX O/M



Part no.: J 1618

Lock Set

• PASSION PRO



Part no.: LS 1914

Lock Set

• SPLANDOR (NXGG)



Part no.: JHSH 004

Lock Set

• SHIINE BS-6



Part no.: JHDN 004

Lock Set

• SD DRAEM BS-6



Part no.: JHA 006 G

Lock Set

• ACTEVA 6G DEC BS-6



Part no.: JHU 107

Lock Set

• UNICORN BS-6



Part no.: JHSH 001

Lock Set

- SHIINE O/M



Part no.: JHDY 001

Lock Set

- DREM YOGA



Part no.: JHU 101

Lock Set

- UNICORN N/M



Part no.: JHSH 003

Lock Set

- SHIINE T-3



Part no.: JHU 001

Lock Set

- UNECORN O/M



Part no.: JHUD 001

Lock Set

- UNECORN DAZLER



Part no.: JHL 002

Lock Set

- LEVO (BS-VI)



Part no.: JHSH 002

Lock Set

- SHIINE N/M



Part no.: JHA 005 G

Lock Set

- ACTEVA 5G

LOCK SETS (2-WHEELER)



Part no.: STL 1919

STL

- SUP. SPLANDOR



Part no.: STL 1916

STL

- STL SPALNDOR PLUSS



Part no.: JHA 004

Lock Set

- ACTEVA T-4



Part no.: STL 1912

STL

- STL SPLANDOR



Part no.: STL 1601

STL

- STL PASIION



Part no.: LS 0421

Lock Set

- DUET



Part no.: STL 1918

STL

- STL SPLANDOR PRRO



Part no.: STL 0304

STL

- STL CD DELUXE



Part no.: JSL 001

Lock Set

- SUZUKE LATS



Part no.: LS 1301 BS-6
LOCK SET
MAESTRO EDGE BS-6



Part no.: LS 1912
LOCK SET
SPLENDOR



Part no.: STL 1616
STL
STL PASSION PLUS



Part no.: PLS 1916
LOCK KIT
SPL PLUS (SET OF 2)



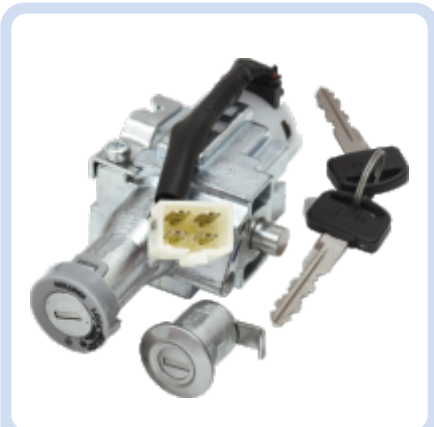
Part no.: JYSZ 001
LOCK SET
SEZ



Part no.: LS 0406
LOCK SET
DESTENI (BS-VI)



Part no.: LS 1301
LOCK SET
MAESTRO EDGE



Part no.: LS 1612 N
LOCK SET
PLAZERE N/M

EK RISHTA
EK VISHWAS



AUTOMOTIVE
HEAD LAMPS
2-WHEELERS



Part no.: JHLC 1620

HEAD LAMP

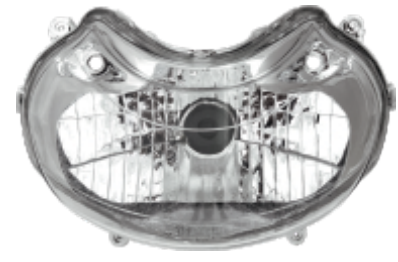
- ▶ PLATINA WITH PARKING



Part no.: JHLC 1615

HEAD LAMP

- ▶ PLN w/o PARKING



Part no.: JHLC 0412

HEAD LAMP

- ▶ DISCOVER 125



Part no.: JHLB 2114

HEAD LAMP

- ▶ UNICORN 150CC



Part no.: JHLC 0318

HEAD LAMP

- ▶ CITY 100 R



Part no.: JHLB 0319

HEAD LAMP

- ▶ CB SHIN



Part no.: JHLB 1908

HEAD LAMP

- ▶ SHINE



Part no.: JHLB 0307

HEAD LAMP

- ▶ ACTIV 3G



Part no.: JHLB 0314

HEAD LAMP

- ▶ ACTIV N/M

HEAD LAMPS (2-WHEELER)



Part no.: JHLD 2414
HEAD LAMP

- XL SPR 100 N/M



Part no.: JHLD 1919
HEAD LAMP

- STAR SPORTS



Part no.: JHLD 1916
HEAD LAMP

- STAR CITY PLUS



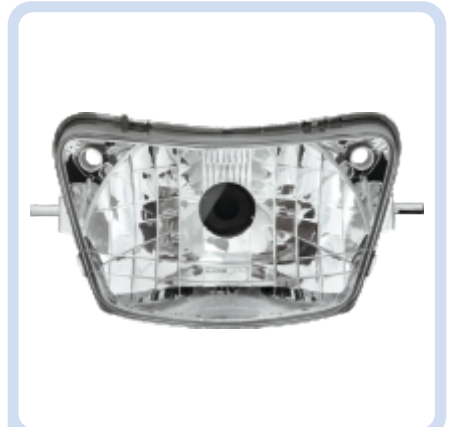
Part no.: JHLD 1903
HEAD LAMP

- STAR CITY



Part no.: JHLC 2419
HEAD LAMP

- XL SPR



Part no.: JHLD 1021
HEAD LAMP

- SHINE



Part no.: JHLA 0301
HEAD LAMP

- CD DWN DLX / AMBITN



Part no.: JHLA 0318
HEAD LAMP

- CD DWN ROUND



Part no.: JHLC 0410
HEAD LAMP

- DSVR 100 CC



Part no.: JHLC 1621

HEAD LAMP

- PLSR UG3



Part no.: JHLA 1919

HEAD LAMP

- SPR SPLDR



Part no.: JHLA 1916

HEAD LAMP

- STAR CITY PLUS



Part no.: JHLA 0913

HEAD LAMP

- I-SMART 110 CC



Part no.: JHLA 2416

HEAD LAMP

- XX PRO



Part no.: JHLA 0304

HEAD LAMP

- CD DILX



Part no.: JHLA 1616

HEAD LAMP

- PSSN PLUS



Part no.: JHLA 0715

HEAD LAMP

- GLMR O/M



Part no.: JHLA 0919

HEAD LAMP

- I SMT / NA XG

CAR DOOR LATCHES & LOCK SETS





Part no.: JDLMS 08

DOOR LATCH

- ◉ SWIFT RL VXI



Part no.: JLSW 01

DOOR LATCH

- ◉ WAGON R LX



Part no.: JLSMS 03

DOOR LOCK SET

- ◉ SWIFT ZXI



Part no.: JDL 7203

DOOR LATCH

- ◉ RR REDI GO



Part no.: JLS 8017

KEYS & CYLINDER SET

- ◉ GRAND I-10



Part no.: JLS 8103

SUB PARTS/ STANDARD KEY SET

- ◉ KWID



Part no.: JDL 7102

MANUAL DOOR REMOTE F/L

- ◉ KWID - NO REMOTE LOCK MODEL UPTO 2015



Part no.: JLSG 01

LOCK SET

- ◉ GYPSY



Part no.: JLSG 02

STEERING LOCK

- ◉ GYPSY

CAR WIPERS





- ◊ Part no.: JW 2418
- ◊ WIPER BLADE
- ◊ 18" (450MM)



- ◊ Part no.: JW 2419
- ◊ WIPER BLADE
- ◊ 19" (475MM)



- ◊ Part no.: JW 2420
- ◊ WIPER BLADE
- ◊ 20" (500MM)



- ◊ Part no.: JW 2421
- ◊ WIPER BLADE
- ◊ 21" (525MM)



- ◊ Part no.: JW 2422
- ◊ WIPER BLADE
- ◊ 22" (550MM)



- ◊ Part no.: JW 2424
- ◊ WIPER BLADE
- ◊ 24" (600MM)

CAR WIPERS



- ◉ Part no.: JW 2426
- ◉ WIPER BLADE
- ◉ 26" (650MM)



- ◉ Part no.: JW 2412
- ◉ WIPER BLADE
- ◉ 13" (325MM)



- ◉ Part no.: JW 2413
- ◉ WIPER BLADE
- ◉ 13" (325MM)



- ◉ Part no.: JW 2414
- ◉ WIPER BLADE
- ◉ 14" (350MM)



- ◉ Part no.: JW 2415
- ◉ WIPER BLADE
- ◉ 15" (375MM)



2-WHEELER
**FUEL TANK
SENSORS**

FUEL TANK SENSORS

FUEL TANK SENSORS



Part no.: J 7060

TANK UNIT

- MAESTRO / DESTENI BS-VI



Part no.: J 7037

TANK UNIT

- SUZUKI ACCESS



Part no.: J 7042

TANK UNIT

- SZ



Part no.: J 9001

USB CHARGER

- SPALNDOR BS-VI



Part no.: J 8002

SPEED SENSOR

- SHIINE MODELS



Part no.: J 7007

TANK UNIT

- UNECORN N/M



Part no.: J 7024

TANK UNIT

- SUP. SPLANDOR



Part no.: J 8001

SPEED SENSOR

- HF DELUX/SPL ALL BS-VI MODERS (MANUAL & ELECTRONICS BOTH)



Part no.: J 8003

SPEED SENSOR

- ACTEVA STANDARD, SMART KEY AND ALL BS-VI MODEL



Part no.: J 7004

TANK UNIT

- CDEN 3 DLX O/M



Part no.: J 7050

TANK UNIT

- SPLANDOR BS-VI



Part no.: J 7001

TANK UNIT

- SPLENDOR



Part no.: J 7016

TANK UNIT

- CDN3 DLX N/M



Part no.: J 7003

TANK UNIT

- ACTEVA



Part no.: J 7023

TANK UNIT

- I SMART 3 NXG

AUTOMOTIVE
LED & HALOGEN
LAMPS



Part no.: JB 408

6/6W 12V

- TYPE : HS1 PX43T



Part no.: JB 409

10 / 10W

- TYPE : HS1 12V



Part no.: JB 412

M5 12V 35/35W

- PLATINA WITH PARKING



Part no.: JB 404

45/40W 12V

- TYPE : HS1 PX43T BLUE



Part no.: JB 401

12V 35/35W

- TYPE : HS1 PX43T



Part no.: JB 457

60/55W 12V

- TYPE : H4 P43T



Part no.: JB 458

100/90W 12V

- TYPE : H4 P43T



Part no.: JB 455

130/100W 12V

- TYPE : H4 P43T



Part no.: JB 402

45/40W 12V

- TYPE : HS1 PX43T (SILVER)



Part no.: JB 404

45/40W 12V

- TYPE : HS1 PX43T BLUE



Part no.: J 1016

12V 21/5W

- TIL LIGHT



EK RISHTA
EK VISHWAS



HORNS



Part no.: J 070
HORN
D-70



Part no.: J 082
HORN
D-82



Part no.: J 074
HORN
D-74

AUTOMOTIVE
REAR VIEW MIRRORS
2-WHEELERS



**REAR VIEW MIRRORS (2-WHEELER)
NON-PAINTED**



Part no.: JM1001R / JM1001L
REAR VIEW MIRROR - HERO

- CD DLX RH / LH



Part no.: JM1002R / JM1002L
REAR VIEW MIRROR - HERO

- HF - DLX RH / LH



Part no.: JM1003R / JM1003L
REAR VIEW MIRROR - HERO

- CD-100 RH / LH



Part no.: JM1004R / JM1004L
REAR VIEW MIRROR - HERO

- SPL. OLD RH / LH



Part no.: JM1005R / JM1005L
REAR VIEW MIRROR - HERO

- SPL.+ RH / LH



Part no.: JM1006R / JM1006L
REAR VIEW MIRROR - HERO

- SUPER SPL RH / LH



Part no.: JM1008R / JM1008L
REAR VIEW MIRROR - HERO

- SPL PRO / PSSN PRO RH / LH



Part no.: JM2001R / JM2001L
REAR VIEW MIRROR - HONDA

- SHINE NEW RH / LH



Part no.: JM2002R / JM2002L
REAR VIEW MIRROR

- ACTIVA OLD RH / LH

REAR VIEW MIRRORS (2-WHEELER) NON-PAINTED



Part no.: JM2003R / JM2003L
REAR VIEW MIRROR - HONDA

◉ ACTIVA NEW RH / LH



Part no.: JM2004R / JM2004L
REAR VIEW MIRROR - HONDA

◉ DIO NEW RH / LH



Part no.: JM3001R / JM3001L
REAR VIEW MIRROR - BJJ

◉ PULSAR DTSI RH / LH



Part no.: JM4001R / JM4001L
REAR VIEW MIRROR - TVS

◉ ALPHA RH / LH



Part no.: JM4002R / JM5002L
REAR VIEW MIRROR - TVS

◉ FASCINO RH / LH



Part no.: JM4003R / JM4003L
REAR VIEW MIRROR - TVS

◉ RAY RH / LH



Part no.: JM4004L / JM4004L
REAR VIEW MIRROR - TVS

◉ APACHE RH / LH



Part no.: JM4005R / JM4005L
REAR VIEW MIRROR - TVS

◉ PHONIX RH / LH



Part no.: JM5001R / JM5001L
REAR VIEW MIRROR - YAMAHA

◉ ALPHA RH / LH

REAR VIEW MIRRORS (2-WHEELER) NON-PAINTED



Part no.: JM5002R / JM5002L
REAR VIEW MIRROR - YAMAHA
◉ FASCINO RH / LH



Part no.: JM5003R / JM5003L
REAR VIEW MIRROR - YAMAHA
◉ RAY RH / LH



Part no.: JM5004L / JM5004R
REAR VIEW MIRROR - YAMAHA
◉ FZ S RH / LH



Part no.: JM6001R / JM6001L
REAR VIEW MIRROR - YAMAHA
◉ SUZUKI ACCESS RH / LH

REAR VIEW MIRRORS (2-WHEELER) PAINTED

REAR VIEW MIRRORS (2-WHEELER) PAINTED



Part no.: JM1009R / JM1009L

REAR VIEW MIRROR

- ◉ PASSION PRO BLACK RH / LH



Part no.: JM1010R / JM1010L

REAR VIEW MIRROR

- ◉ PASSION PRO S.RED RH / LH



Part no.: JM1011R / JM1011L

REAR VIEW MIRROR

- ◉ PASSION PRO C.RED RH / LH



Part no.: JM1012R / JM1012L

REAR VIEW MIRROR

- ◉ PSSN PRO N/M BLACK RH / LH



Part no.: JM1013R / JM1013L

REAR VIEW MIRROR

- ◉ PSSN PRO N/M S.RED RH / LH



Part no.: JM1014R / JM1014L

REAR VIEW MIRROR

- ◉ PSSN PRO NEW C.RED RH / LH



Part no.: JM1015R / JM1015L

REAR VIEW MIRROR

- ◉ GLAMOUR BLACK RH / LH



Part no.: JM1016R / JM1016L

REAR VIEW MIRROR

- ◉ GLAMOUR S.RED RH / LH



Part no.: JM1017R / JM1017L

REAR VIEW MIRROR

- ◉ GLAMOUR C.RED RH / LH



EK RISHTA
EK VISHWAS

NOTES

A series of horizontal dashed lines for writing notes.


**60 years of
Remarkable
Expertise**


**OEM
Quality
Products**


**Cars
runs with JPM
Products**




**Inspiring
Growth**


**Japanese
Quality
Systems**





JPM INDUSTRIES LIMITED

Registered Office : GI-48, G.T. KARNAL ROAD, DELHI-110033

Website : www.jpmgrouppco.in

Marketed by : **SN KOHLI & CO. PVT. LTD.**

Customer Care email ID : snkautoparts@gmail.com • Phone : 7065011146 • 9711118346